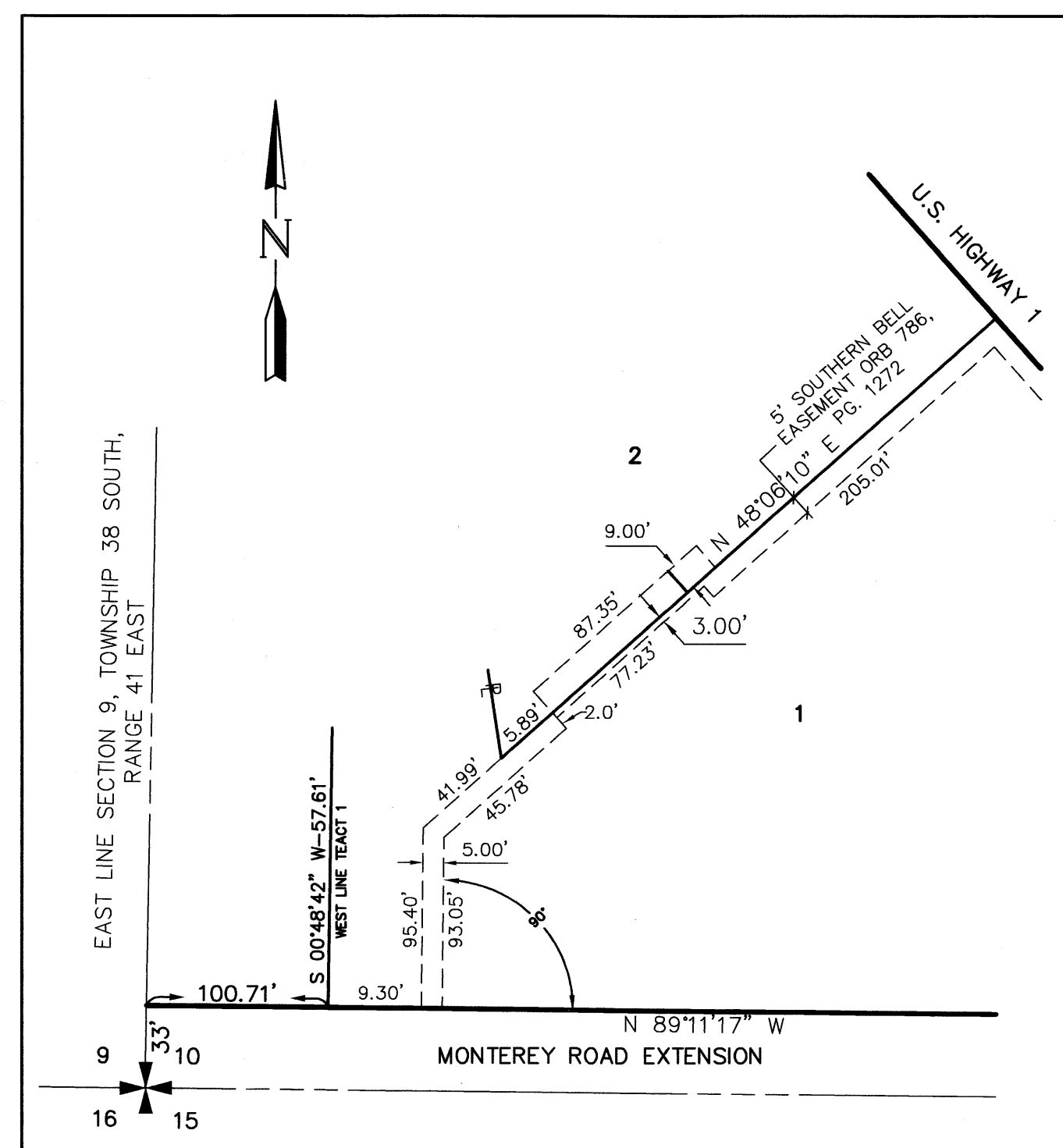


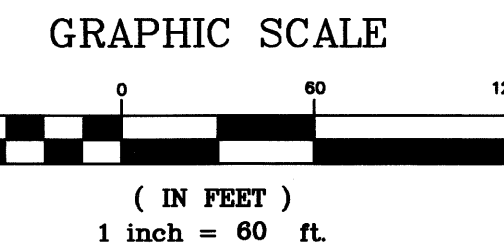
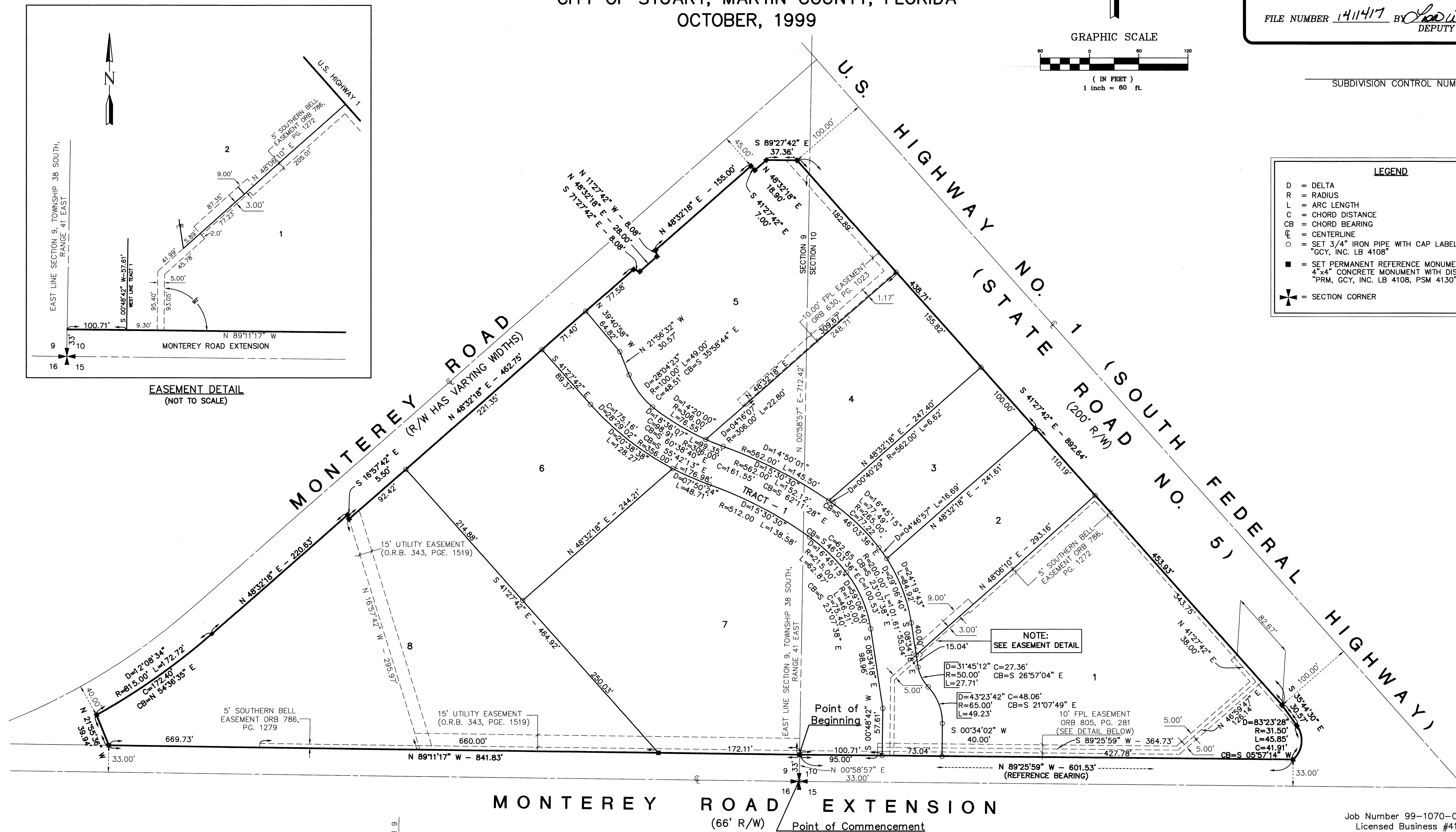
Plat of Monterey Triangle

A PARCEL OF LAND LYING IN SECTIONS 9 AND 10,
TOWNSHIP 38 SOUTH, RANGE 41 EAST,
CITY OF STUART, MARTIN COUNTY, FLORIDA
OCTOBER, 1999

CLERK'S RECORDING CERTIFICATE
I, MARSHA STILLER, CLERK OF THE CIRCUIT COURT
OF MARTIN COUNTY, FLORIDA, HEREBY CERTIFY THAT
THIS PLAT WAS FILED FOR RECORD IN
PLAT BOOK 14, PAGE 80,
MARTIN COUNTY, FLORIDA, PUBLIC RECORDS THIS
13 DAY OF January, 2000
MARSHA STILLER, CLERK OF THE CIRCUIT COURT
MARTIN COUNTY, FLORIDA.
FILE NUMBER 1411417 BY [Signature]
DEPUTY CLERK



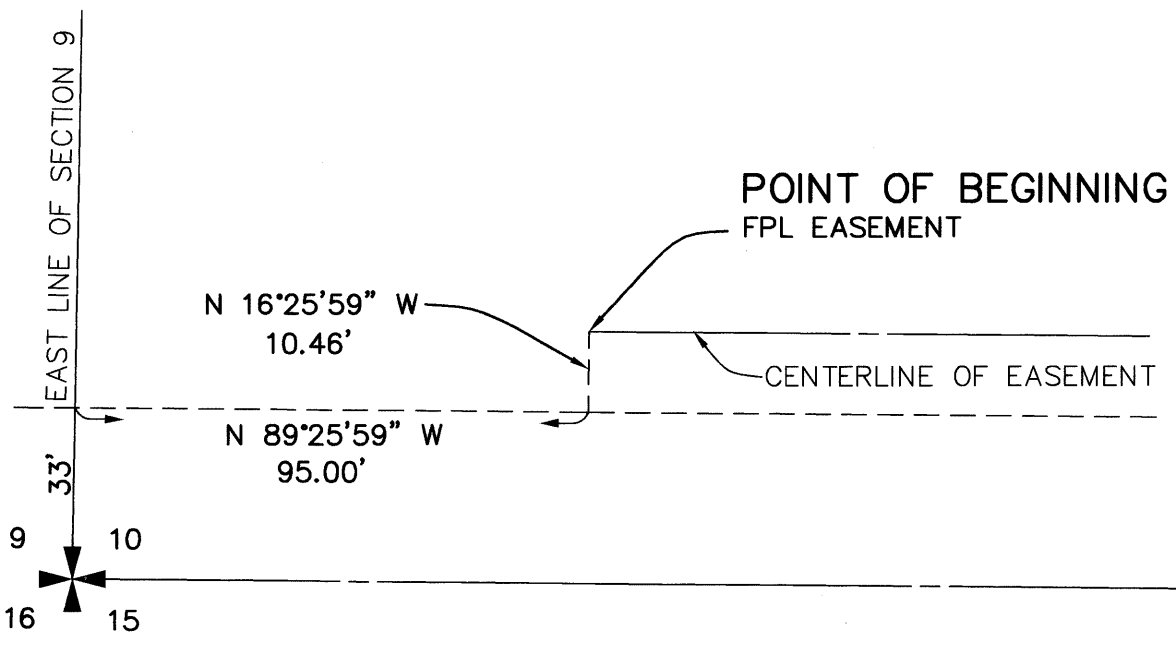
EASEMENT DETAIL
(NOT TO SCALE)



- LEGEND**
- D = DELTA
 - R = RADIUS
 - L = ARC LENGTH
 - C = CHORD DISTANCE
 - CB = CHORD BEARING
 - ⊙ = CENTERLINE
 - = SET 3/4" IRON PIPE WITH CAP LABELED "GCY, INC. LB 4108"
 - = SET PERMANENT REFERENCE MONUMENT (P.R.M.) 4"x4" CONCRETE MONUMENT WITH DISK LABELED "PRM, GCY, INC. LB 4108, PSM 4130"
 - ⊕ = SECTION CORNER

NOTE:
SEE EASEMENT DETAIL

NOTICE:
THIS PLAT, AS RECORDED IN ITS ORIGINAL FORM IN THE PUBLIC RECORDS, IS THE OFFICIAL DEPICTION OF THE SUBDIVIDED LANDS DESCRIBED HEREON AND WILL IN NO CIRCUMSTANCES BE SUPPLANTED IN AUTHORITY BY ANY OTHER FORM OF THE PLAT, WHETHER GRAPHIC OR DIGITAL.
THERE MAY BE ADDITIONAL RESTRICTIONS THAT ARE NOT RECORDED ON THIS PLAT THAT MAY BE FOUND IN THE PUBLIC RECORDS OF THIS COUNTY.



Job Number 99-1070-01-02
Licensed Business #4108

GCY
INCORPORATED
PROFESSIONAL SURVEYORS AND MAPPERS
1505 S.W. MARTIN HIGHWAY P.O. BOX 1469
PALM CITY, FLORIDA 34991 (561-286-8083)
CERTIFICATE OF AUTHORIZATION LB 4108